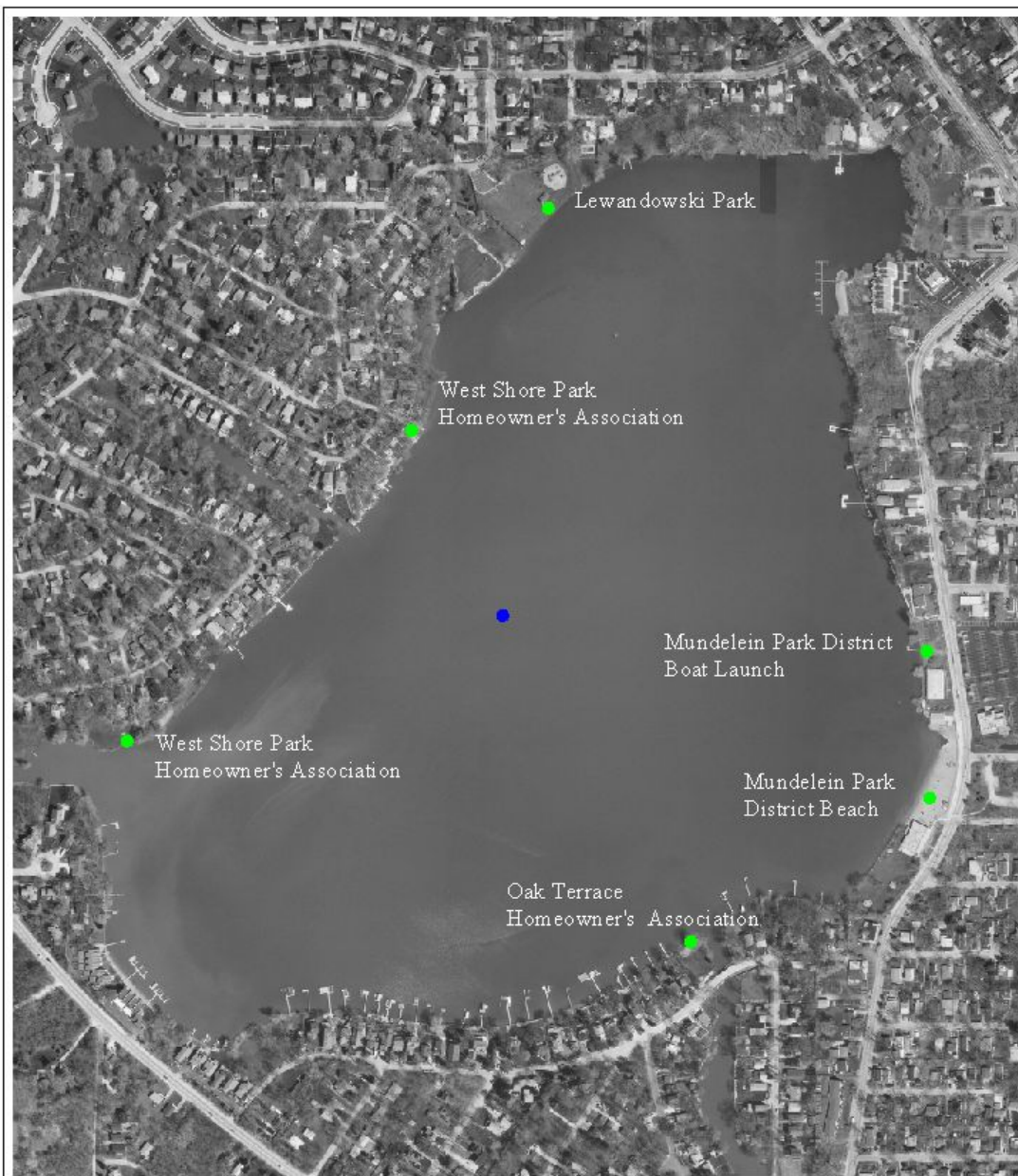




Figure 1. 2002 Diamond Lake sampling location (blue) and access locations (green).



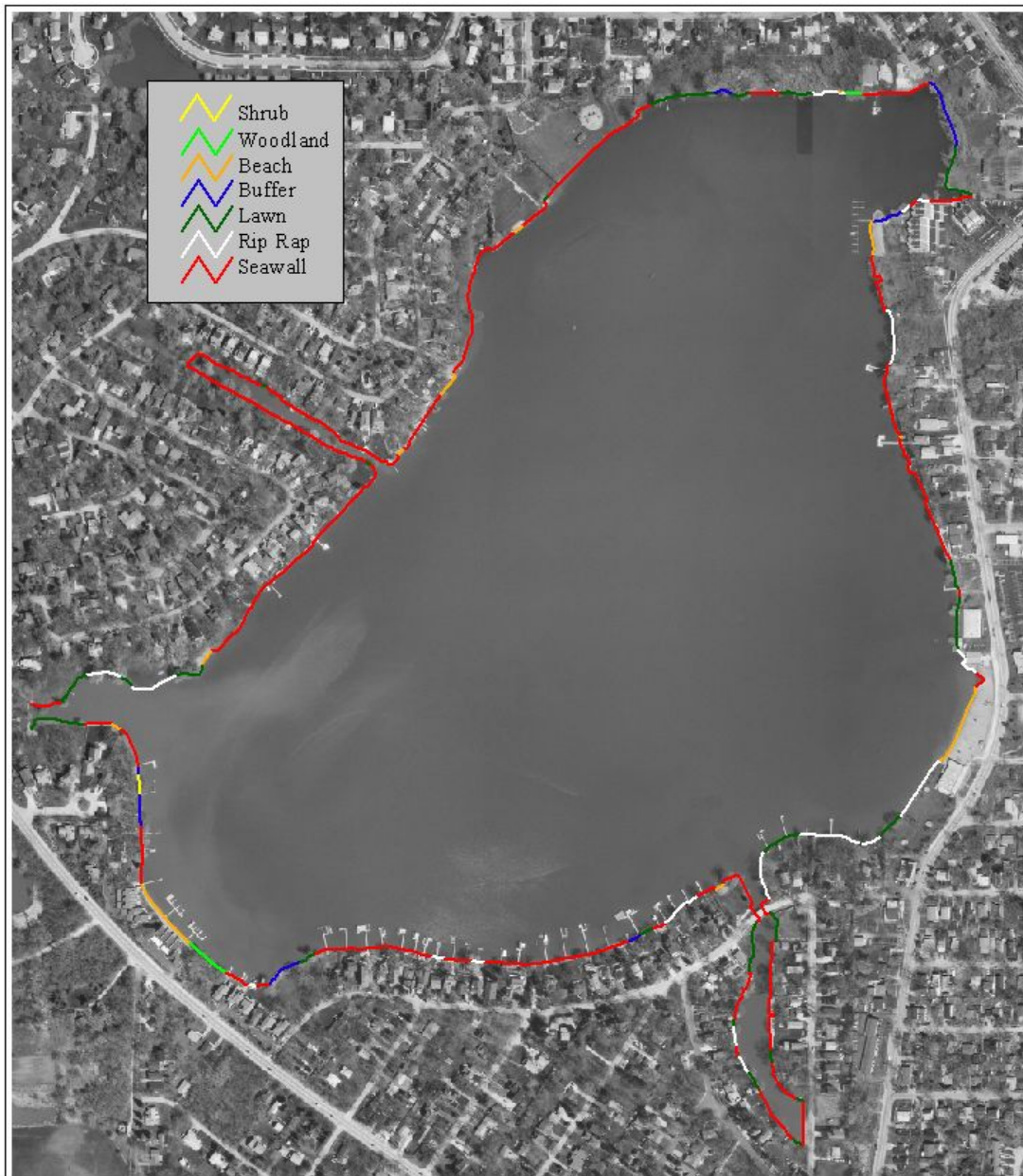
Lake County
Heritage, Recreation, and
Community Development



0 200 400 600 800 1000 Feet

Lakes Management Unit
Product Number DMD.1
Date Revised 12/6/02

Figure 2. 2002 Shoreline types on Diamond Lake.



0 200 400 600 800 1000 Feet



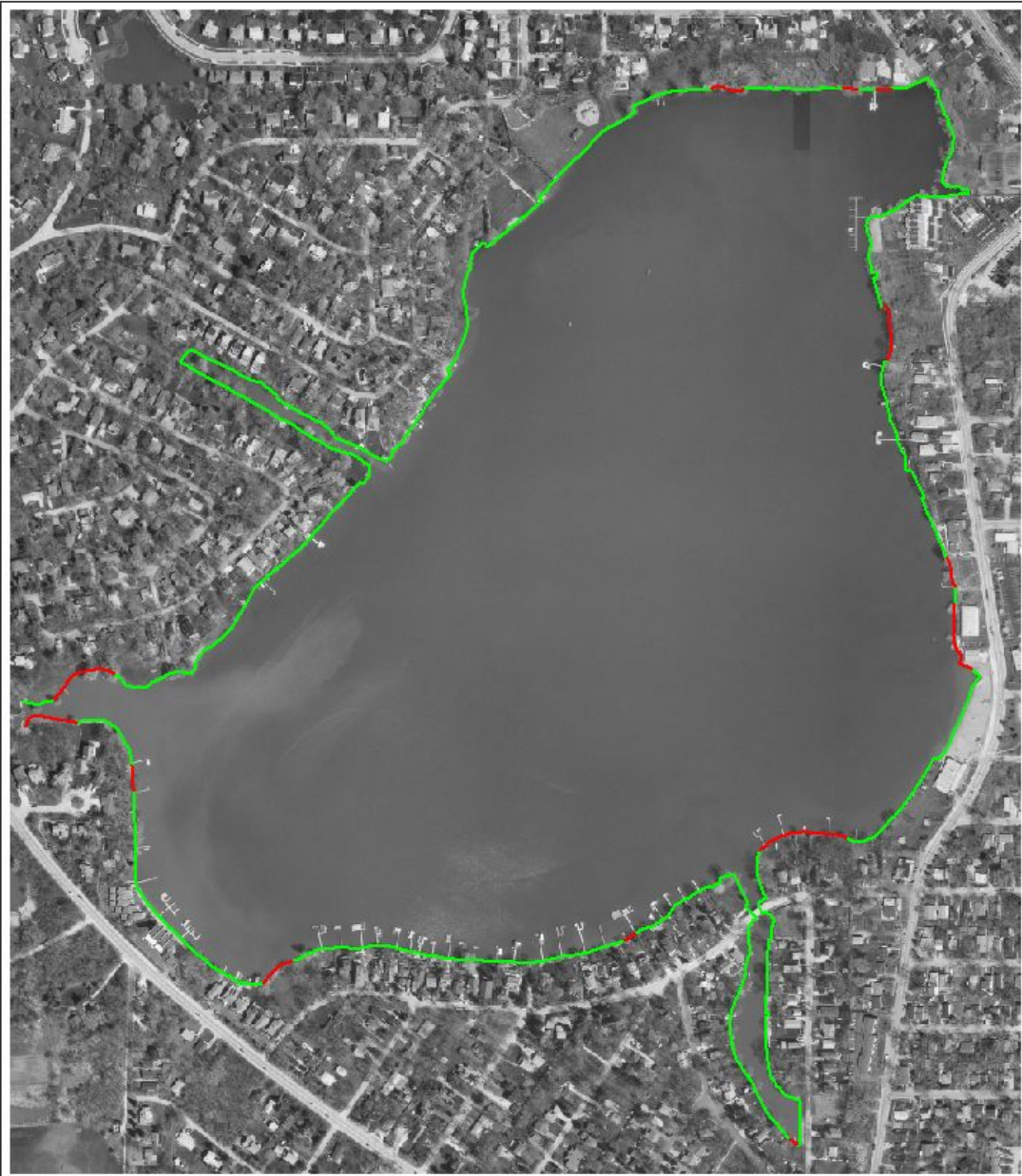
Lakes Management Unit
Product Number - DMD.2
Date Revised - 12/6/02

Figure 3. 2002 shoreline erosion on Diamond Lake.



Lakes Management Unit
Product Number - DMD 3
Date Revised - 12/6/02

Figure 4. Invasive shoreline plant occurrence (red) on Diamond Lake.



Lakes Management Unit
Product Number DMD.4
Revised 12/6/02